



TENTICKLE
bespoke luxury tents

ECO EXPLORER SUITE

05/2022 THE EXPLORER RANGE



ECO EXPLORER SUITE

Side View



ARCHITENTURE & DESIGN

ENGINEERED SHADE ROOF

TECHNICAL DATA

STANDARD EQUIPMENT & ADAPTATION

ECO EXPLORER SUITE

Deconstructed Interior View



ARCHITENTURE & DESIGN

ENGINEERED SHADE ROOF

TECHNICAL DATA

STANDARD EQUIPMENT & ADAPTATION



ARCHITENTURE & DESIGN

ENGINEERED SHADE ROOF

TECHNICAL DATA

STANDARD EQUIPMENT & ADAPTATION



ARCHITENTURE & DESIGN

ENGINEERED SHADE ROOF

TECHNICAL DATA

STANDARD EQUIPMENT & ADAPTATION

ECO EXPLORER SUITE

Engineered Shade Roofing



ARCHITENTURE & DESIGN

ENGINEERED SHADE ROOF

TECHNICAL DATA

STANDARD EQUIPMENT & ADAPTATION

ECO EXPLORER SUITE

Engineered Shade Roofing

For extremely hot and sunny countries Tentickle have developed a double roofing system by adding 90% shade cloth about 50cm above the Tentflex roof. Made from high density and high tensile PE sewn with PTFE Tenara Thread, this keeps the tent cool during the day, breaks the wind and extends the lifetime of the tent. The shade cloth is re-enforced with a central panel of Tentflex fabric to ensure durability and to get that stylish stretch tent flow.

» **HEAT REDUCTION** - creating a second climate chamber, the double roofing guarantees a comfortable living climate inside the cabin.

» **NATURAL APPEARANCE** - the shade net is non-reflective and therefore blends in well with nature.

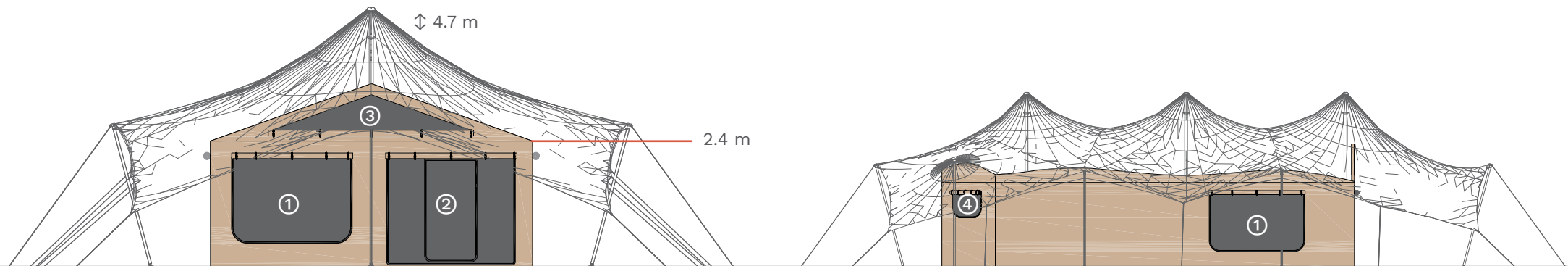
» **LIFETIME ENHANCING** - the outer shade gives protection to the stretch tent roof and extends its lifetime several years, depending on location.

» **EXTRA WEATHER PROTECTION** - the mesh of the shade reduces the rain drop sound immensely and gives extra wind stability.

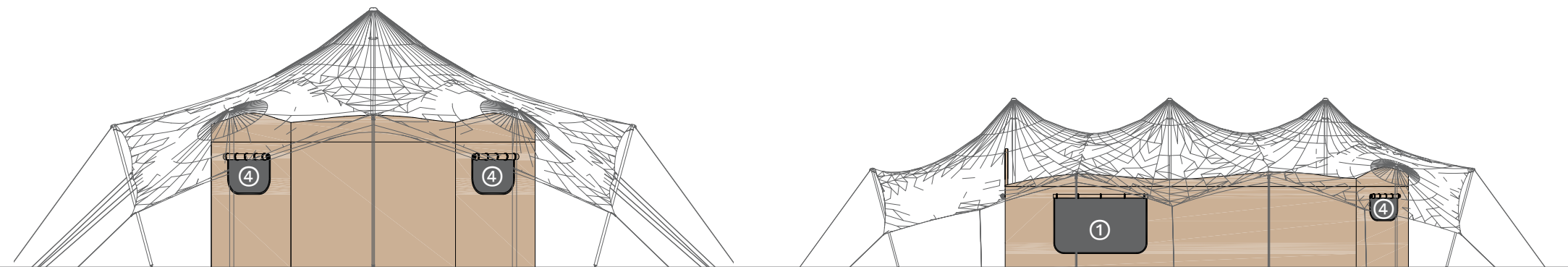


ECO EXPLORER SUITE

Elevations



① window 2500 x 1700 mm, ② door 2500 x 2100 mm, ③ window 3700 x 700 mm, ④ window 800 x 500 mm



ECO EXPLORER SUITE

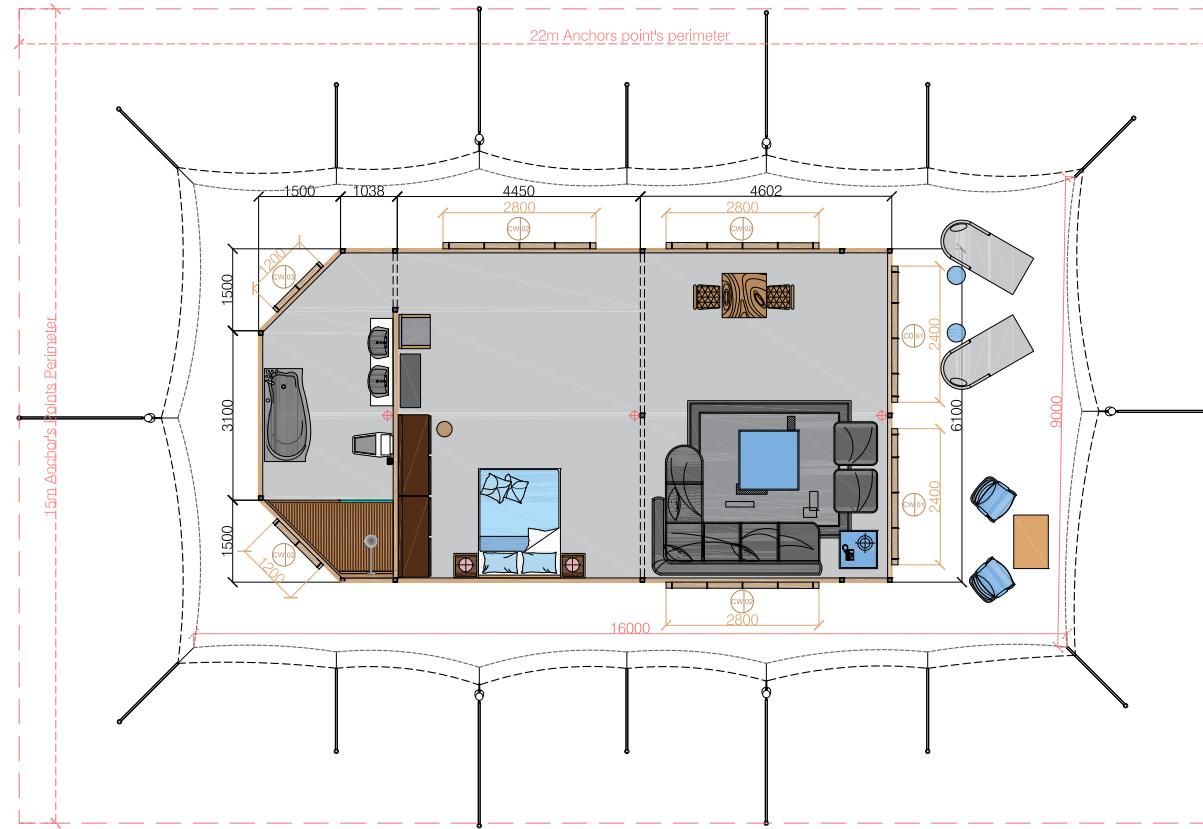
Technical Data & Floor Plan

THE STRETCH TENT ROOF: 770gr Tentickle Tentflex, fire-retardant, waterproof, UV repellent, anti-microbial, highly tensile, Teflon-coated polyester stretch. The outside has a smooth, matt finish with a water-repellent lotus effect. The inside of the fabric has a natural flow and a soft, organic feel – not requiring any further draping. The fabric reflects light very effectively and offers a great canvas for spectacular lighting concepts.

The stretch tent roof is available in taupe outside/ chino inside, Howard green outside/ chino inside, grey outside/ grey inside and chino outside/ chino inside. All tents are sewn with the long-lasting PTFE Tenara Thread.

THE CABIN: 500gr ripstop canvas, flame retardant, anti-fungal, combined with high tensile rubber coated mesh and optional non-milking clear PVC. Available in light grey or chino. Custom colours are available for large orders.

WARRANTIES: Tentickle gives three years limited warranty on the material and one year warranty on the workmanship.



ECO EXPLORER SUITE

Standard Equipment & Adaptation

STRETCH TENT & SHADE ROOF

	STANDARD	OPTIONAL
16 m x 9 m Tentflex FR stretch tent roof	●	-
18 m x 11 m engineered 90% block out shade roof	-	●
Poly braid rope	●	-
6 mm rubber coated steel cable	●	-
M10 stainless steel bow shackles	●	-
80 cm rebar steel ground pegs	●	-
100 cm rebar steel ground pegs	-	●
Rapid foot concrete free earth anchor	-	●
89 mm aluminium interior poles	●	-
76 mm aluminium exterior poles (up to 3 m)	●	-
Treated and varnished blue gum exterior wooden poles	●	-
Exterior poles: client's choice between wood or aluminium		
Furnishings and fittings not included.		

CANVAS CABIN

	STANDARD	OPTIONAL
68.5 m² 500g ripstop canvas panel cabin & ripstop canvas roof	●	-
2.5 m x 1.7 m roll up canvas panoramic windows (x3)	●	-
3.7 m x 0.7 m roll up gable window (x1)	●	-
2.5 m x 2.1 m removable roll up canvas zip door (x1)	●	-
0.8 m x 0.5 m roll up canvas bathroom breather window (x2)	●	-
Wood burning stove back board and flue port panel	-	●
Roll up PVC windows (for above sizes)	-	●
Removable roll up PVC door (for above sizes)	-	●
Mosquito mesh windows	●	-
Insulated bedroom head board wall	-	●
Phenolic composite cabin frame	●	-