



TENTICKLE  
LUXURY TENTS

ARGO  
FACT SHEET



INSULATED  
LUXURY  
TENTS  
10/2023



Tentickle's Insulated Luxury Tents represent the leading edge of our brand.

Advantages of the insulated panels are improvement of wind stability, sound proofing and most importantly heat & cold insulation. These tents are suited for very hot or very cold climates and can be heated or air-conditioned. They showcase an ingenious combination of the Lodge Tent Range and the Glamper Range.

Add the optional outer shade net to these luxury camping tents for added protection and longevity.



# INSULATED LUXURY TENTS

INTRO





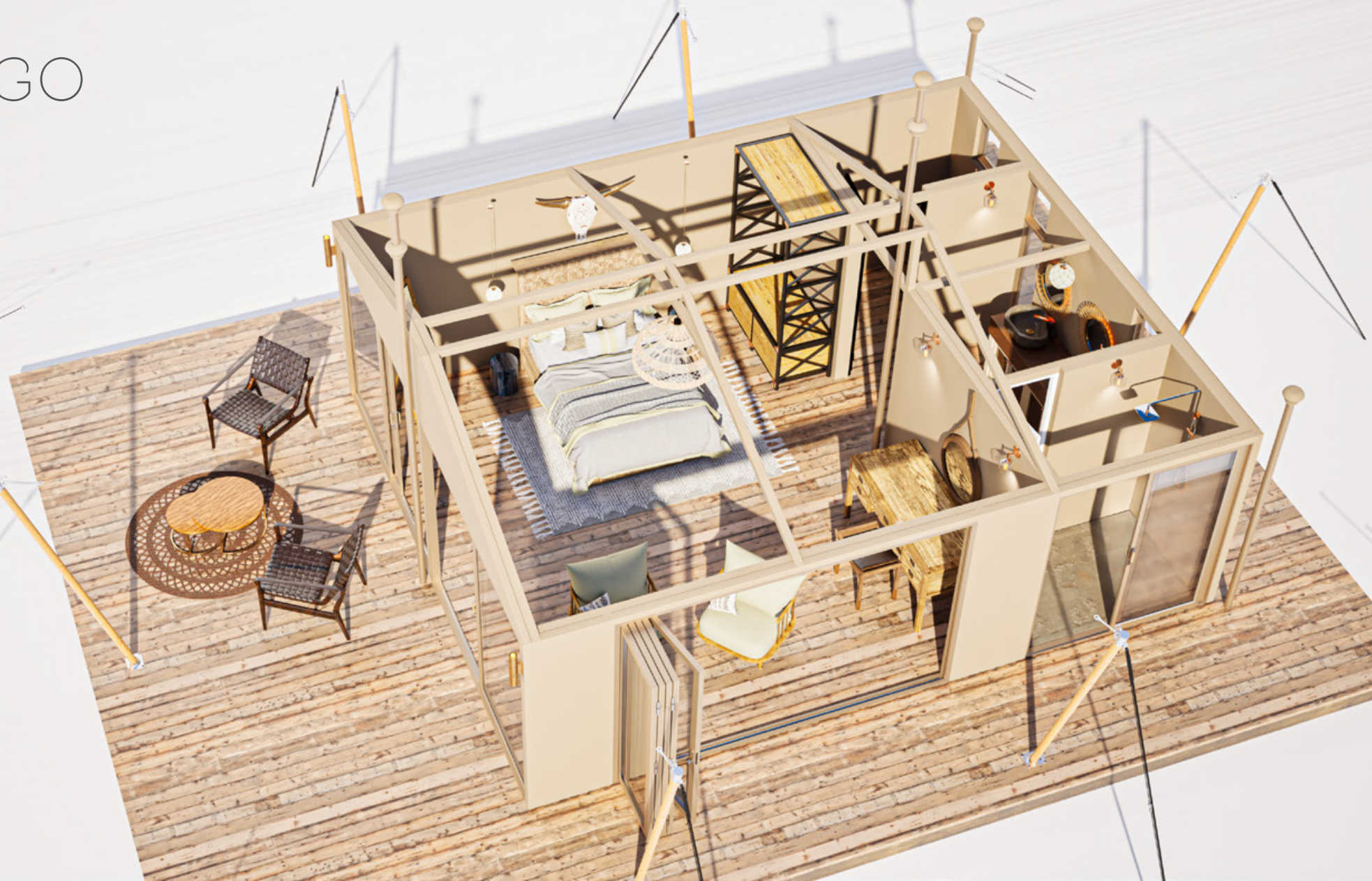






# ARGO

X-RAY



ARGO  
PERSPECTIVE





ARGO  
SIDE VIEW



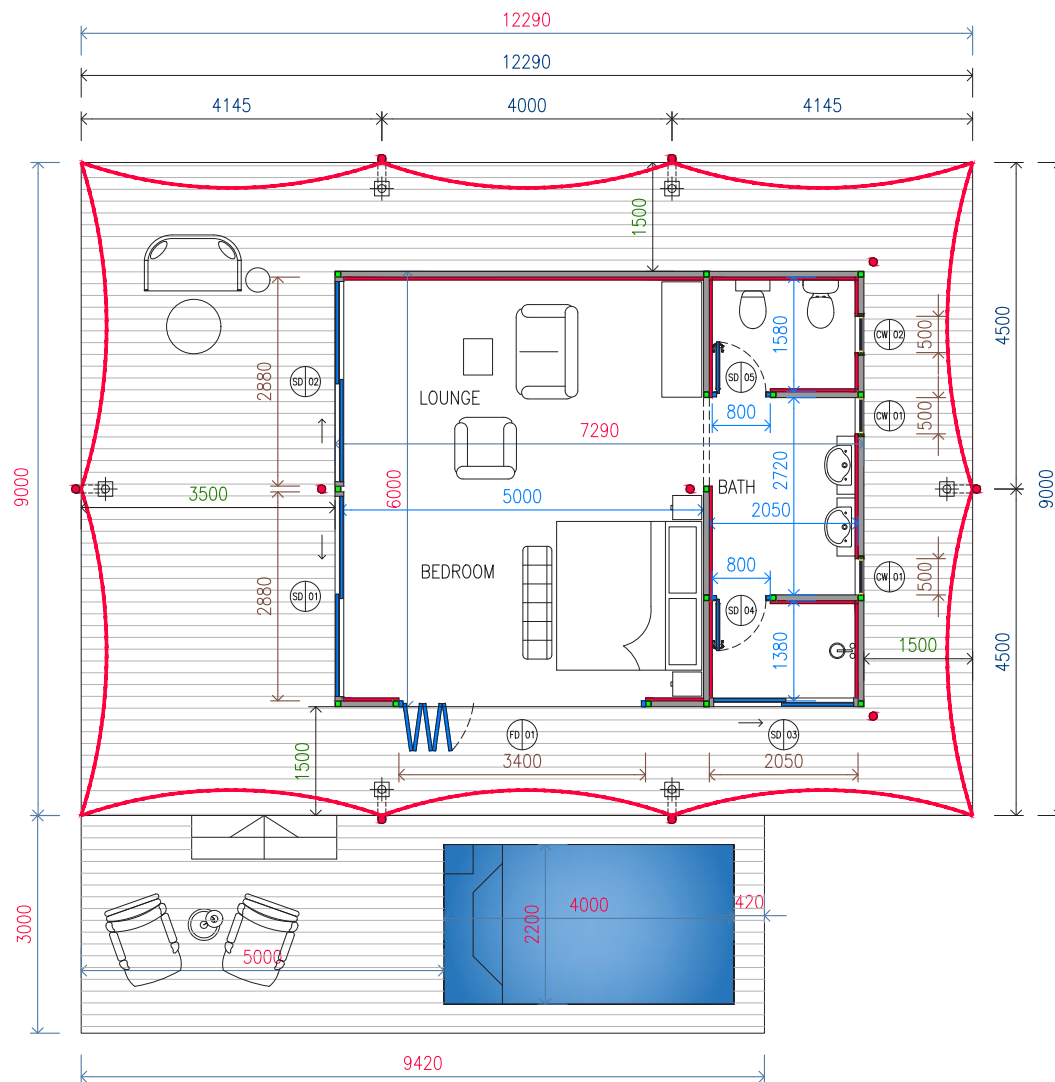
# ARGO

## FLOORPLAN

- 44 m<sup>2</sup> indoor living space
- 110 m<sup>2</sup> canopy

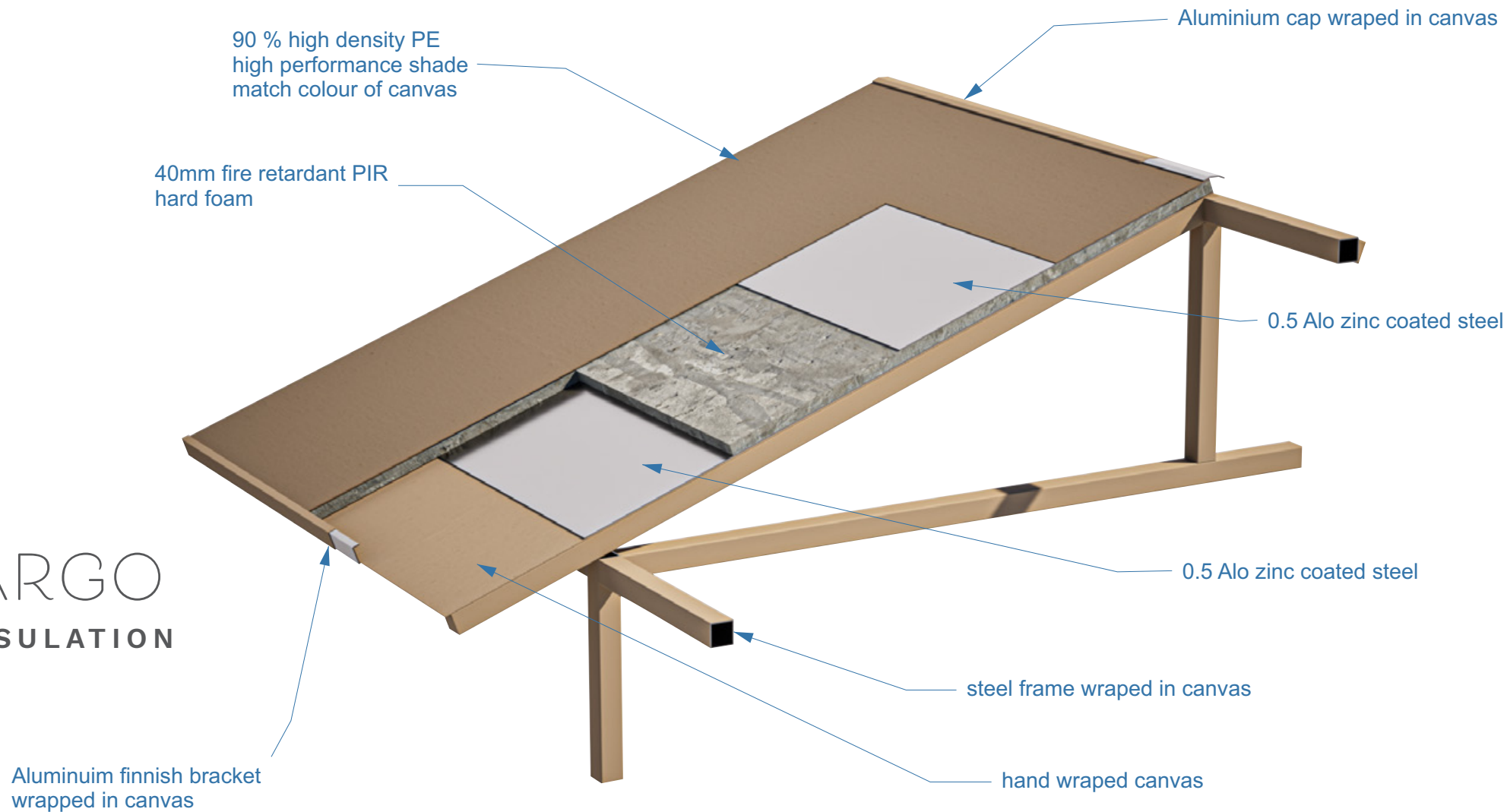
The insulated panels are made from PIR hard foam with great fire-retardant properties. These hard-shell panels are sandwiched between polyester resin and then hand wrapped with canvas. Colours can be chosen based on your interior palette.

The wall and roofing panels are produced seamlessly and divided in maximum size modules for easy transport and DIY installation. Electrical conduits and plumbing can be built into the panels according to your requirements.





# ARGO INSULATION



# ARGO

## INFO

- 44 m<sup>2</sup> indoor living space
- 110 m<sup>2</sup> canopy

THE STRETCH TENT ROOF: 770gr Tentickle Tentflex, fire-retardant, waterproof, UV repellent, anti-microbial, highly tensile, Teflon-coated polyester stretch. The outside has a smooth, matt finish with a water-repellent lotus effect. The inside of the fabric has a natural flow and a soft, organic feel – not requiring any further draping. The fabric reflects light very effectively and offers a great canvas for spectacular lighting concepts.

THE CABIN: 500gr ripstop canvas, flame retardant, anti-fungal, combined with high tensile rubber coated mesh and optional non-milking clear PVC. Available in light grey, chino, ivory and taupe.

